







<b>Name</b>	<b>Type</b>	<b>Pen Portrait</b>
 Janet Barker	Community	<p>Janet Barker is currently the Head of Children’s Centres/ Early Help Hubs in Trafford and has worked in the Partington for approximately 10 years. Janet is passionate about supporting families to access support for themselves and their families whilst their children are young, so that they are ready and able to learn when they start school.</p> <p>Janet has lived in Trafford all of her life and has almost 40 years’ experience in Early Years. She holds the National Professional Qualification in Centre Leadership (NPQICL.)</p>
 Kieron Champion	Community	<p>“Kieron Champion is currently the Chief Knowledge Strategy Officer for Cleary Gottlieb and has previously held leadership positions at KPMG, Accenture, and the House of Lords.</p> <p>Kieron has 20+ years of experience in developing and leading programs and solutions within knowledge-intensive organisations, with a particular focus on collaboration and knowledge sharing, application of technology and artificial intelligence, and process improvement. He is an advisor and mentor to a number of legal technology start-ups and is a guest lecturer at the University of Manchester.</p> <p>As governor, Kieron wishes to support the aims and mission of the Dean Trust and the staff of the Forest Gate and Partington Central Academies, to make a positive and lasting impact on the education and opportunities for their pupils.</p> <p>Kieron lives in Trafford, is married, and has two children in secondary education.</p>



 <p>George Devlin</p>	Community	<p>George is the Chair of Governors at Partington Learning Partnership Local Governing Body. A governor at Forest Gate since October 2010 he took on the role of Chair at Forest Gate in 2015 and was appointed to the role of Chair of the new LGB with responsibility for both Forest Gate Academy and Partington Central Academy in 2016.</p> <p>George is local to Trafford and worked for many years for Manchester City Council in Health and Social Care.</p> <p>Since retiring in 2011, George has continued his commitment to support the development of health, social care and education services at a local level through multiple voluntary roles such as the chairing of Manchester BME Health and Social Care Partnership and the Partington Hub Children's Centre Advisory Board.</p> <p>He is also the West Area representative on Trafford CCG's Public Reference Advisory Panel and has recently been appointed the Board of Trafford Housing Trust Social Investment Board. He believes focusing on the strengths of individuals, families and communities is the most successful route to bridging the gaps in service provision and improving outcomes for people.</p>
 <p>Roy Dixon</p>	Community	<p>Roy Dixon is currently the CEO of The Manchester Clinic and has substantial experience in healthcare. He has worked in some of the largest and most complex healthcare organisations in the UK and has specialist interests in health economics, inequalities in health and international health provision. He has a Cabinet appointment by the Ministry of Justice to an Independent Monitoring Board and has contributed to the review of education in prisons.</p>



Anita Edwards

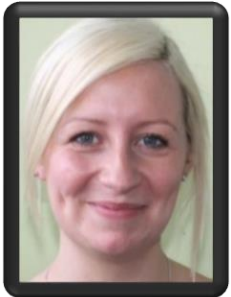
Ex-Officio

Anita Edwards is an experienced educationalist, with over 20 years of experience in primary schools. She has previously undertaken leadership roles in the primary sector across two local authorities and in settings including schools, private and school-based nurseries and a Children's Centre.

Anita joined Brockholes Wood Primary School (Lancashire) in January 2006 as Deputy Headteacher, taking on the role of Acting Headteacher in September 2007 before transitioning into the position permanently. During this period the school moved from a 'Satisfactory' Ofsted grading to 'Outstanding' in Nov 2008. Demand for places saw the school grow from a one form entry school to pupil numbers exceeding admissions capacity.

In Sept 2013, Anita took up the headship at Partington Primary School (Trafford) before joining The Dean Trust in Sept 2016, as Partington Central Academy. In Nov 2016, she transferred to Forest Gate Academy to fill the position of Headteacher until summer 2017. She is now currently Executive Headteacher of both Partington Central Academy and Forest Gate Academy.

Anita has the National Professional Qualification for Headship, NCTL accreditation as a Pupil Premium Reviewer and is a member of the Maths Hub Strategic Board for the North West.



Katy Higginson

Ex-officio

Katy Higginson is currently the Head of School working across both Forest Gate Academy and Partington Central Academy. She has worked across a range of year groups previously and has held a position on the Senior Leadership Team at Forest Gate Academy since 2012.

Katy is currently the lead on assessment across the four primary schools in the Trust.

Katy works collaboratively with the other primary and secondary schools in the Trust supporting with transition and data. She also works closely with The Dean Trust Teaching School and sits on their strategic board.

She is a committed member of staff at Forest Gate Academy, Partington Central Academy and the Governing Body.



THE DEAN TRUST

## Partington Learning Partnership



Cara Jennings

Staff  
Governor -  
FGA

Cara Jennings is the Year 5 Teacher and Maths Lead at Forest Gate Academy. Cara joined the teaching team at FGA after completing her SCITT and PGCE at the Ashton-on Mersey Teaching School in 2017.

In September 2021, Cara took up the role of Dean Trust Primary Maths Lead. Cara works collaboratively with the primary school Maths leads to support the pedagogy of Mathematics across the Trust. She is passionate about improving learning outcomes and pupils' attitudes to Maths.

In July 2022, Forest Gate Academy was awarded the Maths Quality Mark 'Liverpool Counts Quality Mark'. This accreditation noted that FGA had a '*creative learning environment within which maths has a pivotal role.*'



Kirsty Thorbjornsen

Staff  
Governor -  
PCA

Kirsty is currently one of the Year 1 Teachers, Phonics lead, Geography lead and Science lead at Partington Central Academy, completing her fifth year of teaching at the school. She completed her NPQML in 2022 which has enabled Kirsty to develop her leadership skills. She has over eight years of experience teaching children from nursery to year 6.

Kirsty is currently working closely with the English hub to improve phonics and reading across the school. She has a strong passion for ensuring that all children have the opportunity to reach their full potential.